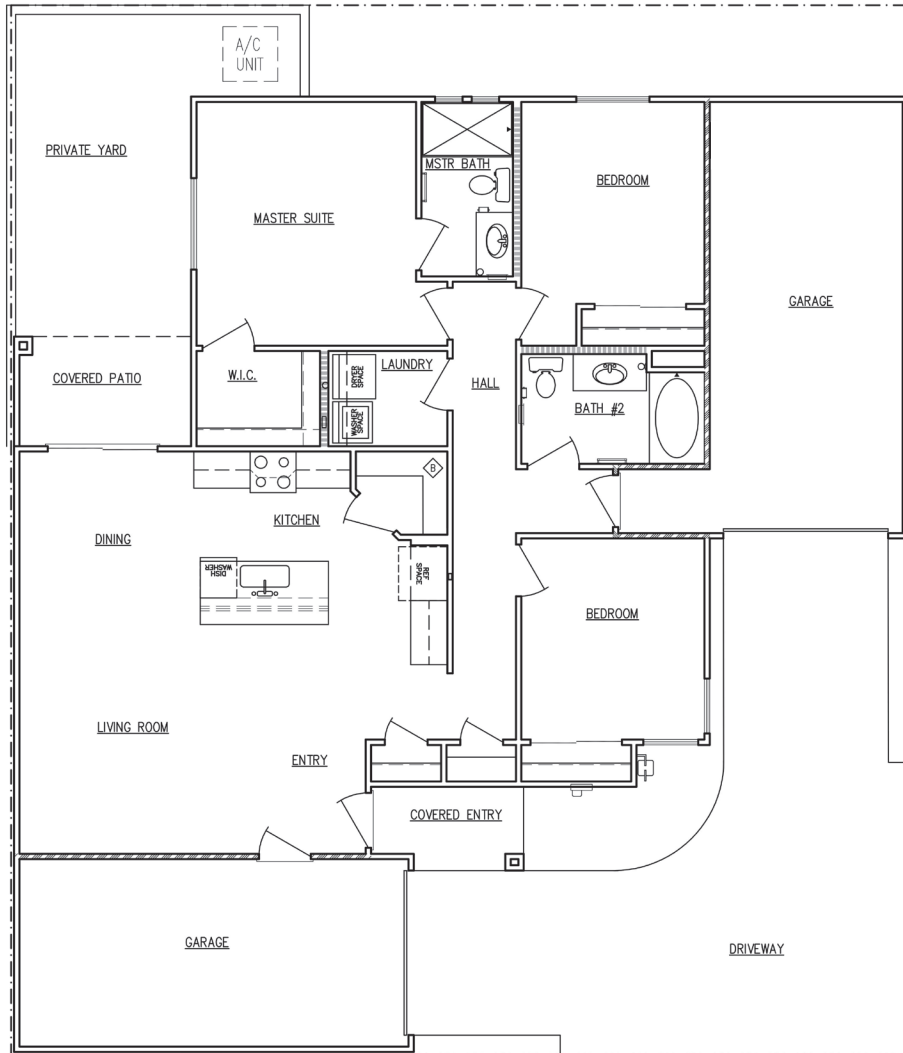


# THE Cottages

BOULDER HIGHWAY / BOULDER CITY, NEVADA



## FLOOR PLAN #1

1300 SQ.FT.

3 BEDROOM - 2 BATH

2 GARAGES

PRIVATE YARD



BOULDER CITY'S HOMETOWN BUILDER SINCE 1994

1576 Foothill Drive, Boulder City, NV 89005 / 702-293-7343

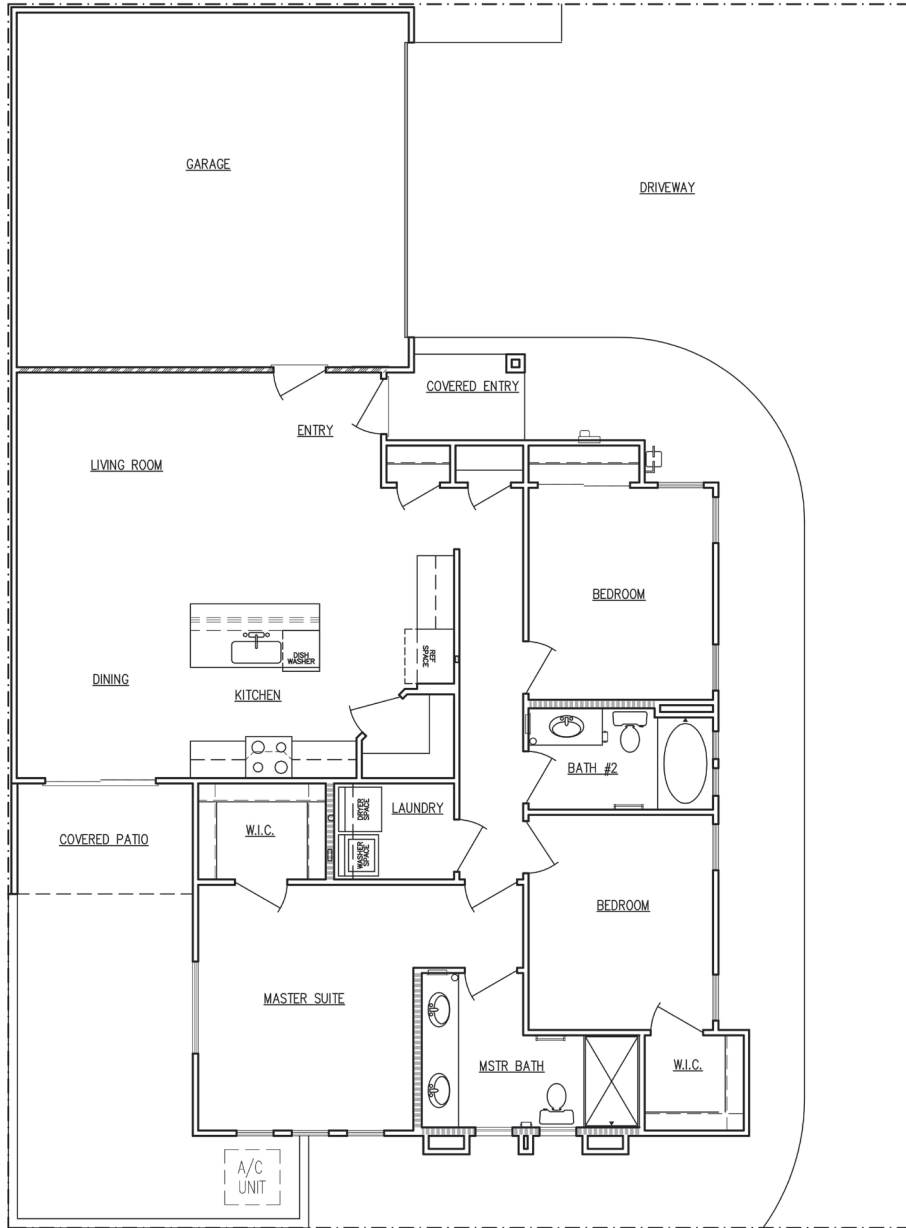
[rps homes.com](http://rps homes.com)

In continuous effort by RPS Homes to improve the quality of your homes, we reserve the right to change features, prices, plans and specifications without notice. Floor plans and elevation renderings are artists' conceptions only. RPS Homes reserves the right to modify, relocate or eliminate any or all of the features, specifications, plan utilities, design or shape thereof, all without notice or obligations to any purchaser. Price Range reflects base price only. Location premiums will be charged for certain locations and are not included in the base price of the home. Additional association fees may apply. All square footages are square footages of the total livable space. Please see your RPS Homes Sales Associate for additional information and more details.



# THE Cottages

BOULDER HIGHWAY / BOULDER CITY, NEVADA



## FLOOR PLAN #2

1340 SQ.FT.

3 BEDROOM - 2 BATH

2-CAR GARAGE

PRIVATE YARD



BOULDER CITY'S HOMETOWN BUILDER SINCE 1994

1576 Foothill Drive, Boulder City, NV 89005 / 702-293-7343

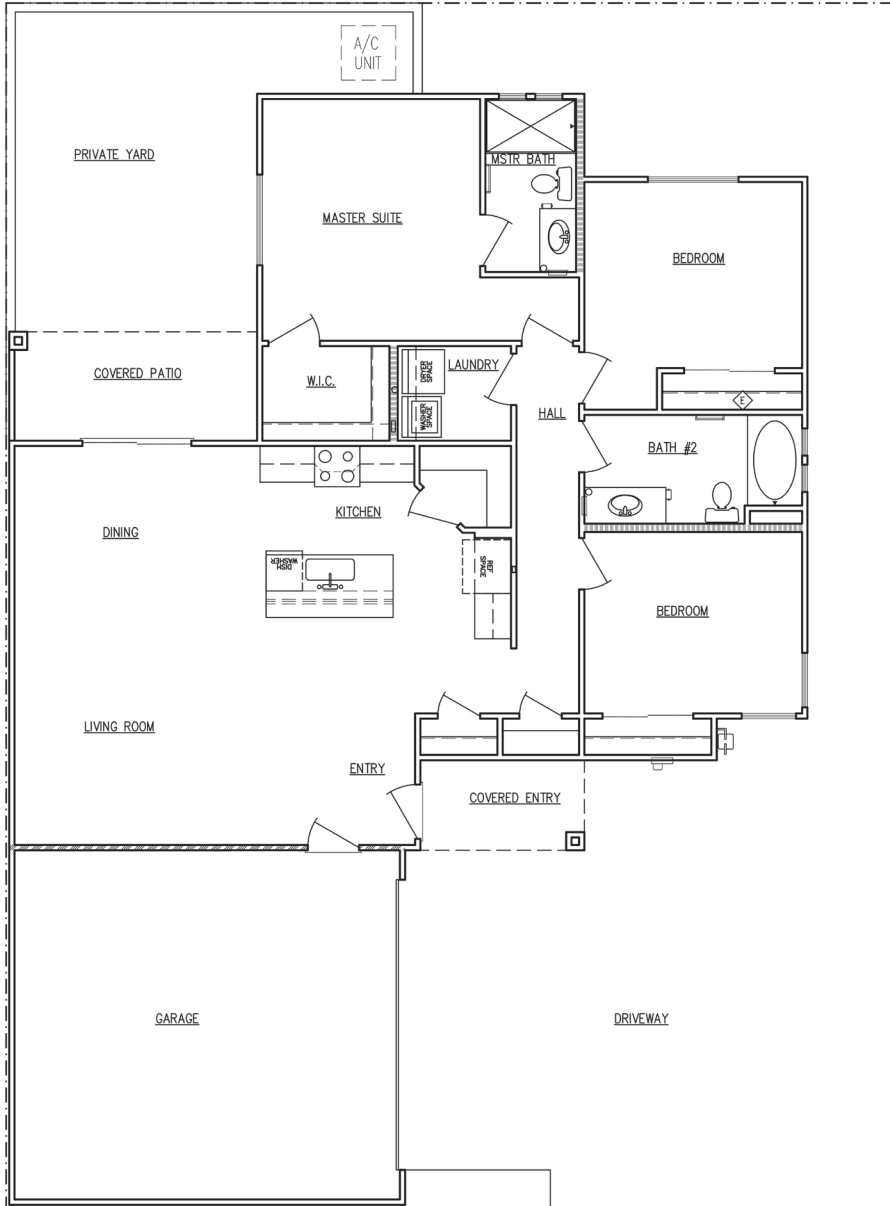
[rps homes.com](http://rps homes.com)

In continuous effort by RPS Homes to improve the quality of your homes, we reserve the right to change features, prices, plans and specifications without notice. Floor plans and elevation renderings are artists' conceptions only. RPS Homes reserves the right to modify, relocate or eliminate any or all of the features, specifications, plan utilities, design or shape thereof, all without notice or obligations to any purchaser. Price Range reflects base price only. Location premiums will be charged for certain locations and are not included in the base price of the home. Additional association fees may apply. All square footage are square footages of the total livable space. Please see your RPS Homes Sales Associate for additional information and more details.



# THE Cottages

BOULDER HIGHWAY / BOULDER CITY, NEVADA



## FLOOR PLAN #3

1400 SQ.FT.

3 BEDROOM - 2 BATH

2-CAR GARAGE

PRIVATE YARD



BOULDER CITY'S HOMETOWN BUILDER SINCE 1994

1576 Foothill Drive, Boulder City, NV 89005 / 702-293-7343

[rps homes.com](http://rps homes.com)

In continuous effort by RPS Homes to improve the quality of your homes, we reserve the right to change features, prices, plans and specifications without notice. Floor plans and elevation renderings are artists' conceptions only. RPS Homes reserves the right to modify, relocate or eliminate any or all of the features, specifications, plan utilities, design or shape thereof, all without notice or obligations to any purchaser. Price Range reflects base price only. Location premiums will be charged for certain locations and are not included in the base price of the home. Additional association fees may apply. All square footage are square footages of the total livable space. Please see your RPS Homes Sales Associate for additional information and more details.

